



INDÚSTRIAS ROMI



AGENDA



Romi industrial complex - Santa Bárbara d'Oeste/SP - Brazil



- Timeline and Corporate Video

- Romi Foundation

- Highlights

- Business units

- Global Player

- Brazilian manufacturing plants

- Heavy Duty – C series

- Heavy Duty – VT series



TIMELINE



Américo Emílio Romi



Romi is founded
Garage Santa Bárbara

1930

1934

Launch of the
1st cast unit

Santa Bárbara d'Oeste

1938

Change its name to
**Máquinas Agrícolas
Romi Ltda**



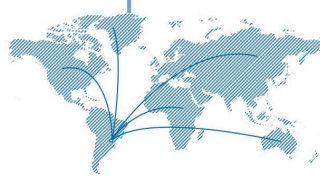
1941



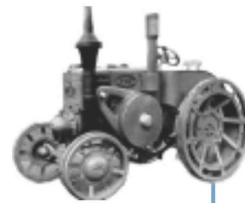
Starts manufacturing
IMOR engine lathes

1944

Starts
exporting



1948



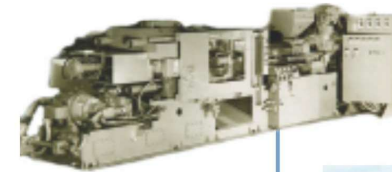
Toro: first
Brazilian tractor

1956



Romi-Isetta: 1st
Brazilian-made car

1957



**Plastic injection
Moulding Machines**

1972



New foundry is
inaugurated, the UF-10

1976

**Heavy Duty Machine
Tools**

1978

TIMELINE



Inauguration of the totally climate-controlled Plant Unit 16, to manufacture machine tools



Upgrade to BM&F Bovespa Novo Mercado



Launch of the Tech Center



Opening of the automatized parts stock – The mini load



Launch of the Five-axis machining center **ROMI DCM 620-5X Hybrid**, combining machining and additive manufacturing



Launch of the **New Generation** of the machining center series **ROMI D**



Launch of the **New Generation** of the turning center series **ROMI GL**

1990

2007

2011

2014

2015

2016

2017

2018

2019

Acquisition of Burkhardt + Weber



Launch of the **Burkhardt+Weber** multitasking horizontal machining center series, the MCT

Opening of the Romi research area at the ITA – Technological Institute of Aeronautics



Launch of the Burkhardt+Weber horizontal machining center series, the MCC, **first joint project with Romi team**

Opening of the new automatic molding line at the foundry



Launch of the machining center **ROMI D Hybrid**, combining machining and additive manufacturing





Funda  o Romi[ ]

Mission: to promote social and human development through Education and Culture

*In 2018, the main investments were applied in education, creative economy and combat vulnerability and social risk. More than **R\$ 4.5 million** was allocated to actions and projects that benefited **thousands of people**.*

NEI

Integrated
Education Center

Kindergarten to High School



CEDOC

Historical
Documentation center

Patrimonial Education



**Programs
and Projects**

CULTURAL STATION

Ninho Musical
Project



Socioeducational
Judo Workshops



Socioeducational
Capoeira
Workshops



HIGHLIGHTS



**Customer
comes 1st**



**Complete
and
customized
solutions**



**Global
player**



**High quality
and
reliability**



**4% of NOR
invested in
R&D**



CERTIFICATES



ABS Quality Evaluations

Certificate Of Conformance

This is to certify that the Quality Management System of:

Industrias Romi S.A.
Avenida Pérola Byington, 56
Santa Bárbara D'Oeste, SP 13453-900
Brasil

(WITH ADDITIONAL FACILITIES LISTED ON ATTACHED ANNEX)

has been assessed by ABS Quality Evaluations, Inc. and found to be in conformance with the requirements set forth by:

ISO 9001:2015

The Quality Management System is applicable to:

**DESIGN, DEVELOPMENT, PRODUCTION, SALES AND SERVICE OF MACHINE TOOLS AND MACHINES FOR PLASTICS;
MANUFACTURE AND SALES OF CASTING IRON, MACHINED PARTS AND MACHINING SERVICES**

This certificate may be found on the ABS QE Website (www.abs-qe.com). For certificates issued in the People's Republic of China information may also be verified on the CNCA website (www.cnca.gov.cn).

Certificate No: 31120
Last Expiry Date: 20 December 2000
Original Approval Date: 21 December 1994
Certification Date: 26 October 2003
Effective Date: 25 June 2018
Expiration Date: 30 July 2021
Issue Date: 25 June 2018

Alex Weisselberg
Alex Weisselberg, President



Validity of this certificate is based on the successful completion of the periodic surveillance audits of the management system defined by the above scope and is contingent upon prompt written notification to ABS Quality Evaluations, Inc. of significant changes to the management system or components thereof.

ABS Quality Evaluations, Inc. 1701 City Plaza Drive, Spring, TX 77389, U.S.A.

Validity of this certificate may be confirmed at www.abs-qe.com/cert_validation.

Copyright 2011-2021 ABS Quality Evaluations, Inc. All rights reserved.

ABS Quality Evaluations

Certificate Of Conformance

This is to certify that the Environment Management System of:

Industrias Romi S.A.
Avenida Perola Byington, 56
Santa Bárbara D'Oeste, SP 13453-900
Brasil

(WITH ADDITIONAL FACILITIES LISTED ON ATTACHED ANNEX)

has been assessed by ABS Quality Evaluations, Inc. and found to be in conformance with the requirements set forth by:

ISO 14001:2015

The Environment Management System is applicable to:

**DESIGN, DEVELOPMENT, PRODUCTION, SALES AND SERVICE OF MACHINE TOOLS AND PLASTIC PROCESSING MACHINE;
MANUFACTURE AND SALES OF CASTING IRON, MACHINED PARTS AND MACHINING SERVICES.**

This certificate may be found on the ABS QE Website (www.abs-qe.com). For certificates issued in the People's Republic of China information may also be verified on the CNCA website (www.cnca.gov.cn).

Certificate No: 70671
Last Expiry Date: 11 August 2011
Original Approval Date: 12 August 2005
Certification Date: 05 September 2011
Effective Date: 07 December 2020
Expiration Date: 06 June 2023
Revision Date: 18 December 2020

Dominic Townsend
Dominic Townsend, President



Validity of this certificate is based on the successful completion of the periodic surveillance audits of the management system defined by the above scope and is contingent upon prompt written notification to ABS Quality Evaluations, Inc. of significant changes to the management system or components thereof.

ABS Quality Evaluations, Inc. 1701 City Plaza Drive, Spring, TX 77389, U.S.A.

Validity of this certificate may be confirmed at www.abs-qe.com/cert_validation.

Copyright 2011-2021 ABS Quality Evaluations, Inc. All rights reserved.

ABS Quality Evaluations

Certificate Of Conformance

This is to certify that the Quality Management System of:

Industrias Romi S.A.
Rodovia SP 304 - Km 141
Santa Barbara D'Oeste, SP 13453-900
Brasil

(WITH ADDITIONAL FACILITIES LISTED ON ATTACHED ANNEX)

has been assessed by ABS Quality Evaluations, Inc. and found to be in conformance with the requirements set forth by:

IATF 16949:2016

The Quality Management System is applicable to:

**MANUFACTURE OF CASTING AND MACHINED IRON PARTS,
EXCLUDING : PRODUCT DESIGN - IATF 16949:2016 CLAUSE 8.3**

Certificate No: 42191
Effective Date: 23 August 2018
Expiration Date: 22 August 2021
Issue Date: 23 August 2018
IATF No: 0324967

Alex Weisselberg
Alex Weisselberg, President



Validity of this certificate is based on the successful completion of the periodic surveillance audits of the management system defined by the above scope and is contingent upon prompt written notification to ABS Quality Evaluations, Inc. of significant changes to the management system or components thereof.

ABS Quality Evaluations, Inc. 14835 Northchase Drive, Houston, TX 77060, U.S.A.

Validity of this certificate may be confirmed at www.abs-qe.com/cert_validation.

Copyright 2011-2018 ABS Quality Evaluations, Inc. All rights reserved.

SAFETY STANDARDS



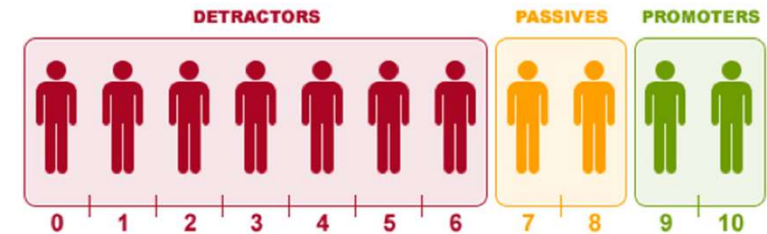
DECLARE COMPLIANCE OF THE PRODUCT IN ACCORDANCE WITH TECHNICAL STANDARDS

Applicable Technical Standards

ISO 13852:2003	Safety of machinery - Safety distances to prevent danger zones being reached by the upper limbs.
ISO 13853:2003	Safety of machinery - Safety distances to prevent danger zones being reached by the lower limbs.
ISO 13854:2003	Safety of machinery - Minimum gaps to avoid crushing of parts of the human body.
ISO 12100:2013	Safety of machinery - General principles for design - Risk assessment and risk reduction.
ISO 23125:2013	Machine tools - Safety - Turning machines.
BS EN 13128:2001+A2:2009	Safety of machine tools - Milling machines (including boring machines).
BS EN 12417:2001+A2:2009	Machine tools - Safety - Machining Centres.

NPS – NET PROMOTER SCORE

ROMI = 67



$$\text{Net Promoter Score} = \% \text{ Promoters} - \% \text{ Detractors}$$

NPS SCORES		NfX
-1 CHASE	72 Apple	
-1 Liberty Mutual Insurance	68 NETFLIX	
-12 WELLS FARGO	62 amazon	
-24 BANK OF AMERICA	50 Google	

BUSINESS UNITS



Romi machines

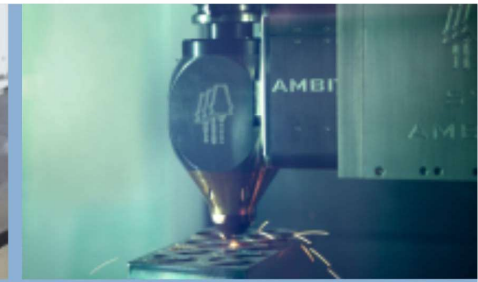
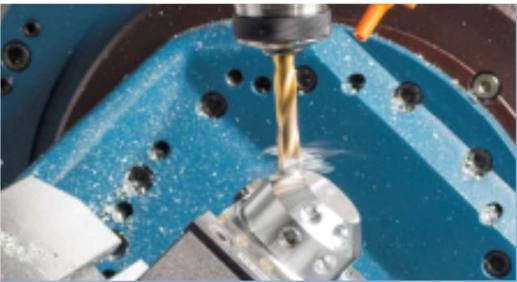


Burkhardt+Weber machines



Raw and Machined Cast Iron Parts

MACHINE TOOLS



Machine Tools

Robustness, accuracy and versatility

Wide portfolio: the best solutions for any size machining

High technology with excellent value

Safe and easy-to-operate equipment



CASTING AND MACHINED PARTS



Casting and Machined Parts



Assorted alloys for production of many parts

High installed capacity

Complete machining solutions

Quality and reliability





- Manufacturing machine tools in Reutlingen – Germany since 1888

- Special solution in manufacturing
- Customized projects
- Highly precise applications



BRAZILIAN MANUFACTURING PLANTS



Manufacturing Plant 01

Light and medium machining



Manufacturing Plants 03 and 83

Metal sheet cutting, assembly and painting of enclosures



Manufacturing Plant 10

Light and medium casting



Manufacturing Plant 11

Medium and heavy machining



Manufacturing Plant 14

Computers and electric and electronical controls



Manufacturing Plant 15

Assembly of Plastic Processing Machines



Manufacturing Plant 16

Assembly of Machine Tools



Manufacturing Plant 19

Assembly of heavy Machine Tools



Manufacturing Plant 82

Heavy casting

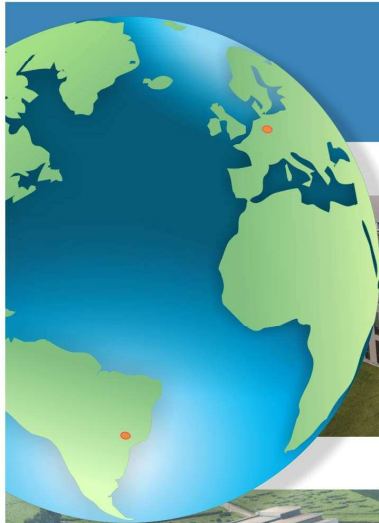


Manufacturing Plant 81

Machining for customers



GLOBAL PLAYER



Manufacturing units

Burkhardt+Weber - Reutlingen, Alemanha



Romi - Santa Bárbara d'Oeste, Brazil



Subsidiaries

Americas

USA
Mexico



Europe

Germany
France
United Kingdom
Spain
Italy

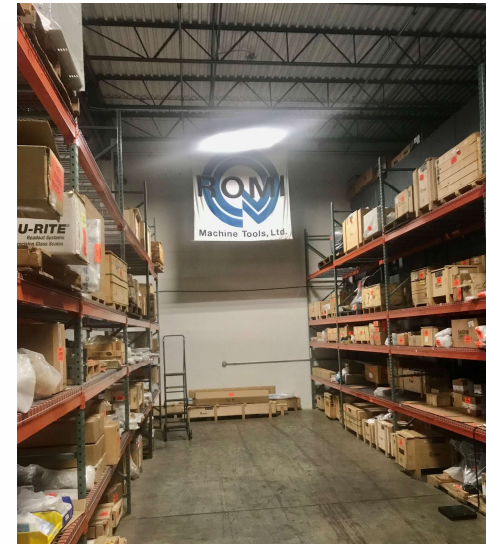


Asia

China



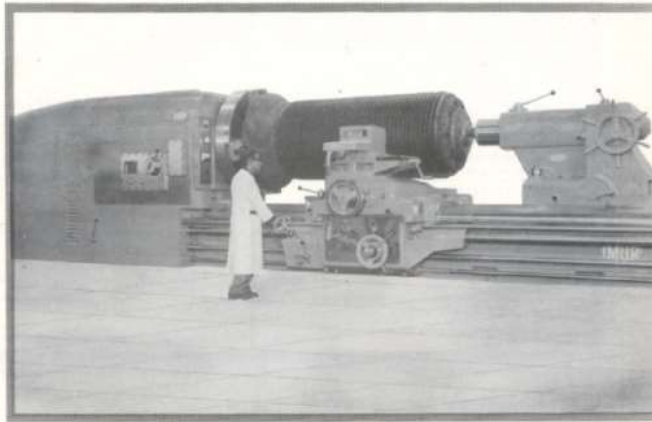
Romi Machine Tools - USA



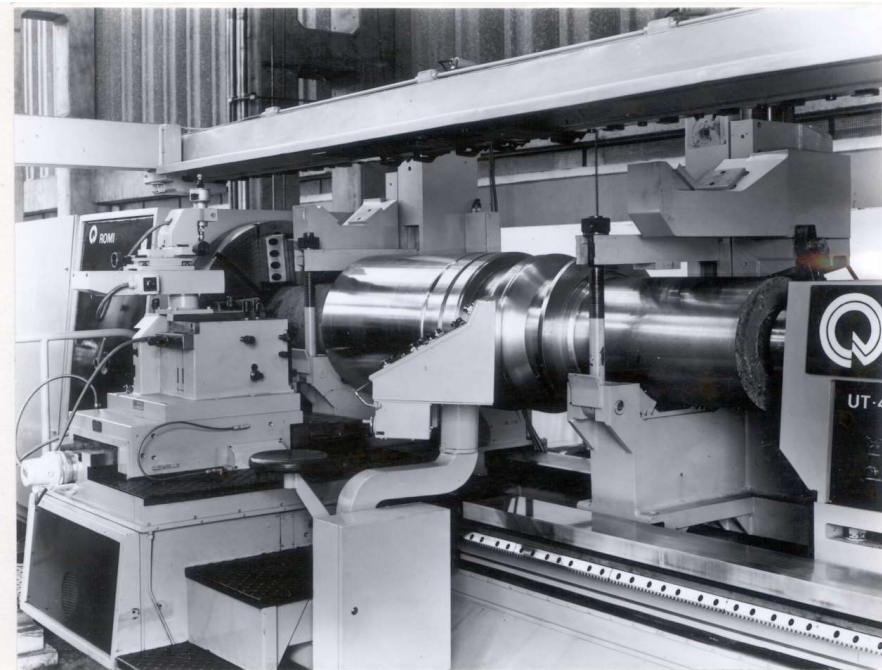
HEAVY DUTY MACHINES - HISTORY



tôrno extra pesado
TP-2 300



- BARRAMENTO EXTRA-PESADO, FUNDIDO EM LIGA DE ALTA QUALIDADE, COM GUIAS PRISMÁTICAS RETIFICADAS EM MÁQUINA ESPECIAL.
- ÁRVORE EM AÇO FORJADO, MONTADA EM TRÊS MANCAIS COM ROLAMENTOS CÔNICOS TIMKEN EXTRA-PESADOS.
- TODOS OS DEMAIS EIXOS TAMBÉM MONTADOS SOBRE ROLAMENTOS.
- CABEÇOTE DE CONSTRUÇÃO COMPACTA COM ENGRENAGENS DE AÇO $C_r Ni Mo$, CEMENTADAS E RETIFICADAS COM OS FLANCOS DOS DENTES ACABADOS POR RETIFICAÇÃO OU "SHAVING".
- CARRO UNIVERSAL COM DESLOCAMENTO RÁPIDO LONGITUDINAL MEDIANTE MOTOR-REDUTOR.
- MOTOR PRINCIPAL DE CORRENTE CONTÍNUA DE ALTO CONJUGADO DE PARTIDA, ALIMENTADO POR UMA UNIDADE CONVERSORA ESTÁTICA DE CORRENTE (RETIFICADORES DE SILÍCIO).
- TESTES FINAIS DE ALINHAMENTO E PRECISÃO DE ACÓRDO COM AS NORMAS "SCHLESINGER".



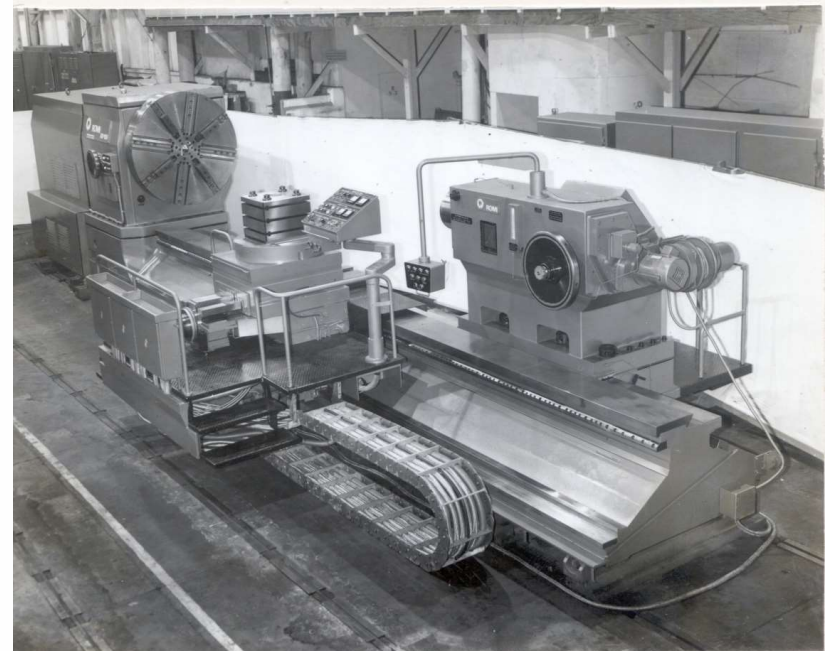
HEAVY DUTY MACHINES - HISTORY



08/02/1979



08/02/1979



04/05/1977

HEAVY DUTY MACHINES – CURRENT DAYS



Heavy Duty – C Series



C1100H / C1290H

Between center = 2 – 9.5 meters
Swing over bed = 1,110 and 1,330mm
Swing over cross slide = 720 and 950mm
Max weight = 33,100 lbs
Spindle = A2-20
Motor = 72HP / 53 KW



C1300H / C1600H

Between center = 3.5 – 12.5 meters
Swing over bed = 1,300 and 1,600mm
Swing over cross slide = 900 and 1,200mm
Max weight = 48,500lbs
Spindle = A2-20
Motor = 114HP / 84 KW

Heavy Duty – C Series



C1800H / C2100H

Between center = 4 – 10 meters

Swing over bed = 1,800 and 2,150mm

Swing over cross slide = 1,200 and 1,650mm

Max weight = 66,100 lbs

Spindle = A2-20

Motor = 72HP / 53 KW



C2200H / C2600H

Between center = 4 – 12 meters

Swing over bed = 2,100 and 2,580mm

Swing over cross slide = 1,500 and 2,030mm

Max weight = 110,200 lbs

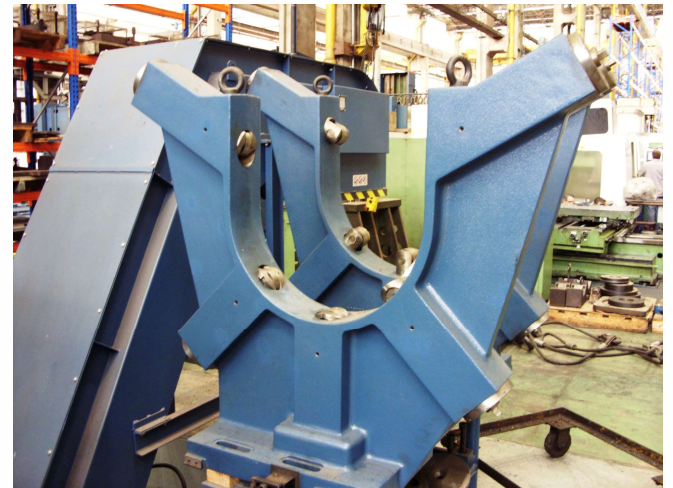
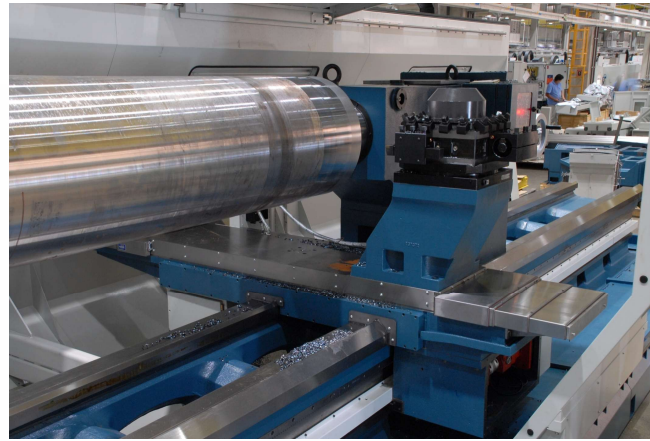
Spindle = A2-20

Motor = 155HP / 114 KW

C series - Details



C series - Details



C series – CNC Siemens 840D



Heavy Duty – VT Series



Heavy Duty – VT Series



Heavy Duty – VT Series



	VT1400M	VT2000M	VT2500M	VT5000M
Chuck diameter [mm]	1,400 (55")	2,000 (79")	2,500 (99")	5,000 (197")
Max turn diameter [mm]	1,600 (63")	2,200 (87")	2,700 (106")	7,000 (275")
Max allowed height [mm]	1,650 (65")	1,650 (65")	2,250 (89")	4,000 (157")
Max speed [rpm]	335	250	180	50
Max part weight [lbs]	22,000	33,000	55,100	198,400
Power motor	84HP / 62KW	84HP / 62KW	84HP / 62KW	144HP / 108KW

Standard:

C axis

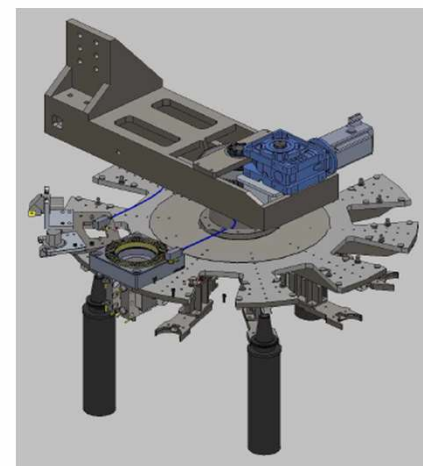
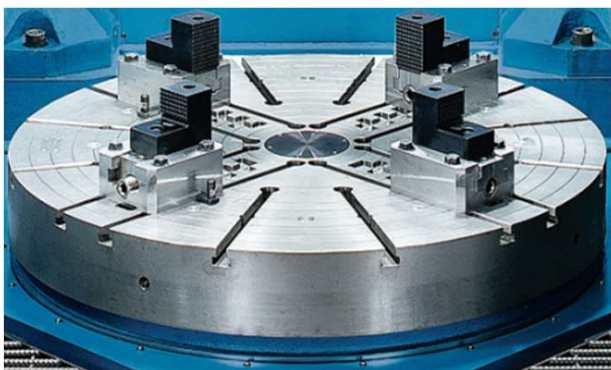
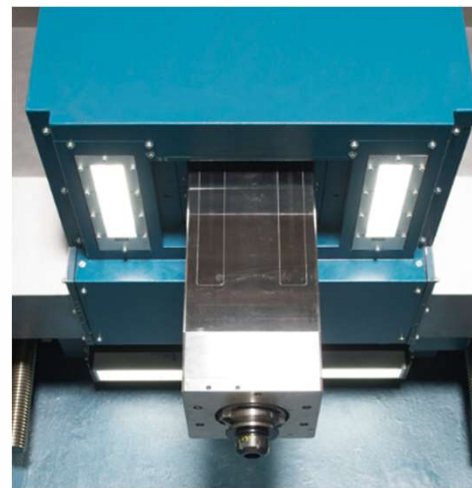
Live tooling = 30 KW

Tool changer magazine

Vertical RAM

Chip conveyor

VT Series - Details



VT Series – CNC Siemens 840D





Rafael Boldorini
General Manager
rboldorini@romiusa.com



ROMI - Early 90s and 2000 in USA and South America

